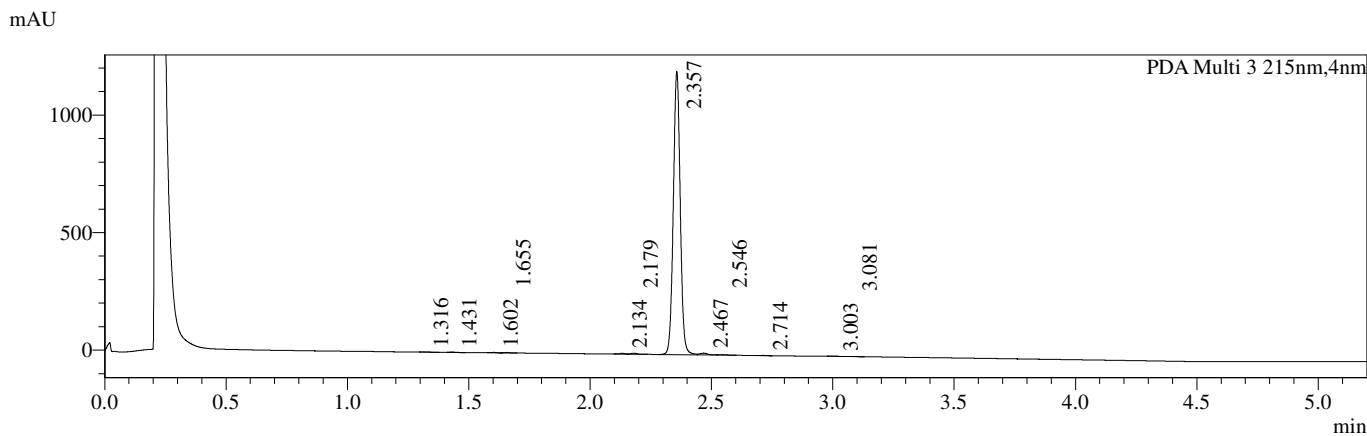
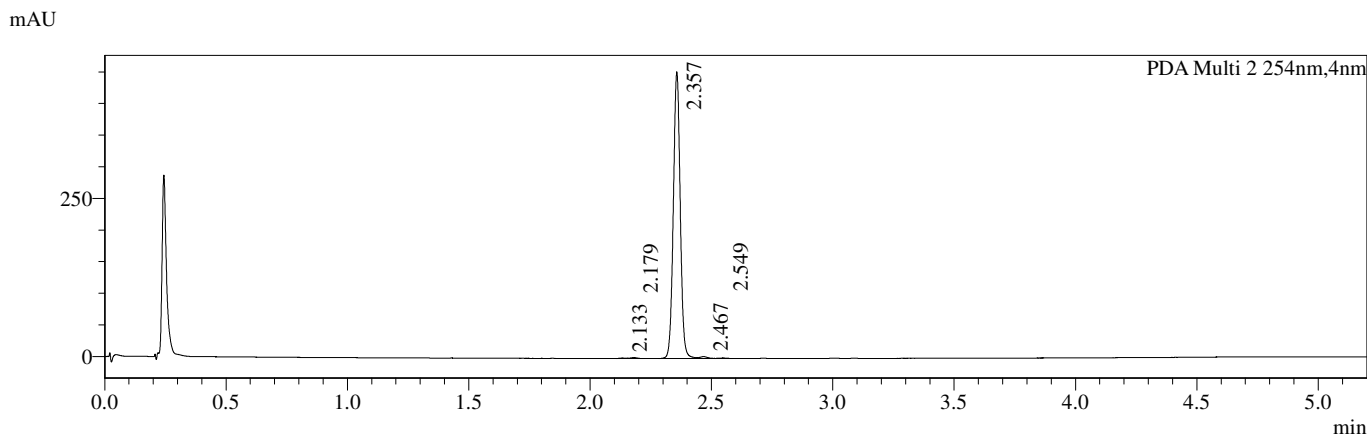
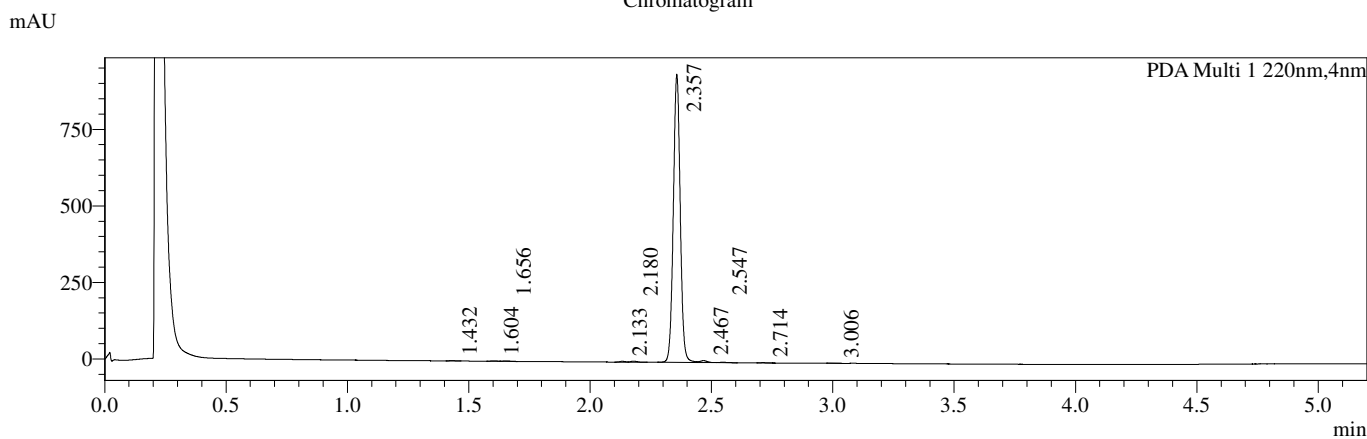


HPLC REPORT

Compound ID : CC-011
 Sample ID : CAS00083-CC-011-a
 Injection Date : 12/2/2024 9:48:06
 Injection Vol : 0.2ul
 Location : tray2 vial07
 Acq Method : D:\method\10_80AB_5min.lcm
 Org DataFile : D:\DATA\2024\2412\241202\CAS00083-CC-011-a.lcd
 Instrument : 03-HPLC-103

Chromatogram



=====
 Integration Result
 =====

PDA Ch1 220nm

Peak#	Ret. Time	Width	Height	Height%	Area	Area%
1	1.432	0.041	1016	0.106	1511	0.080
2	1.604	0.038	1233	0.128	1820	0.096
3	1.656	0.040	1565	0.163	2481	0.131
4	2.133	0.042	2695	0.281	4341	0.229
5	2.180	0.046	3521	0.367	6189	0.326
6	2.357	0.051	940621	98.003	1861252	98.177
7	2.467	0.058	6019	0.627	12496	0.659
8	2.547	0.046	1312	0.137	2435	0.128
9	2.714	0.040	1008	0.105	1657	0.087
10	3.006	0.058	802	0.084	1625	0.086

PDA Ch2 254nm

Peak#	Ret. Time	Width	Height	Height%	Area	Area%
1	2.133	0.043	755	0.165	1207	0.133
2	2.179	0.046	1422	0.310	2520	0.278
3	2.357	0.051	452945	98.755	895293	98.762
4	2.467	0.060	2882	0.628	6248	0.689
5	2.549	0.048	649	0.142	1244	0.137

PDA Ch3 215nm

Peak#	Ret. Time	Width	Height	Height%	Area	Area%
1	1.316	0.044	647	0.053	1142	0.047
2	1.431	0.040	1348	0.110	2044	0.084
3	1.602	0.039	1471	0.120	2215	0.091
4	1.655	0.042	1864	0.152	2916	0.120
5	2.134	0.041	3399	0.277	5274	0.217
6	2.179	0.046	4537	0.369	8013	0.330
7	2.357	0.051	1204156	97.961	2385793	98.158
8	2.467	0.058	7534	0.613	15547	0.640
9	2.546	0.044	1586	0.129	2753	0.113
10	2.714	0.039	1149	0.093	1802	0.074
11	3.003	0.049	951	0.077	1970	0.081
12	3.081	0.040	580	0.047	1093	0.045